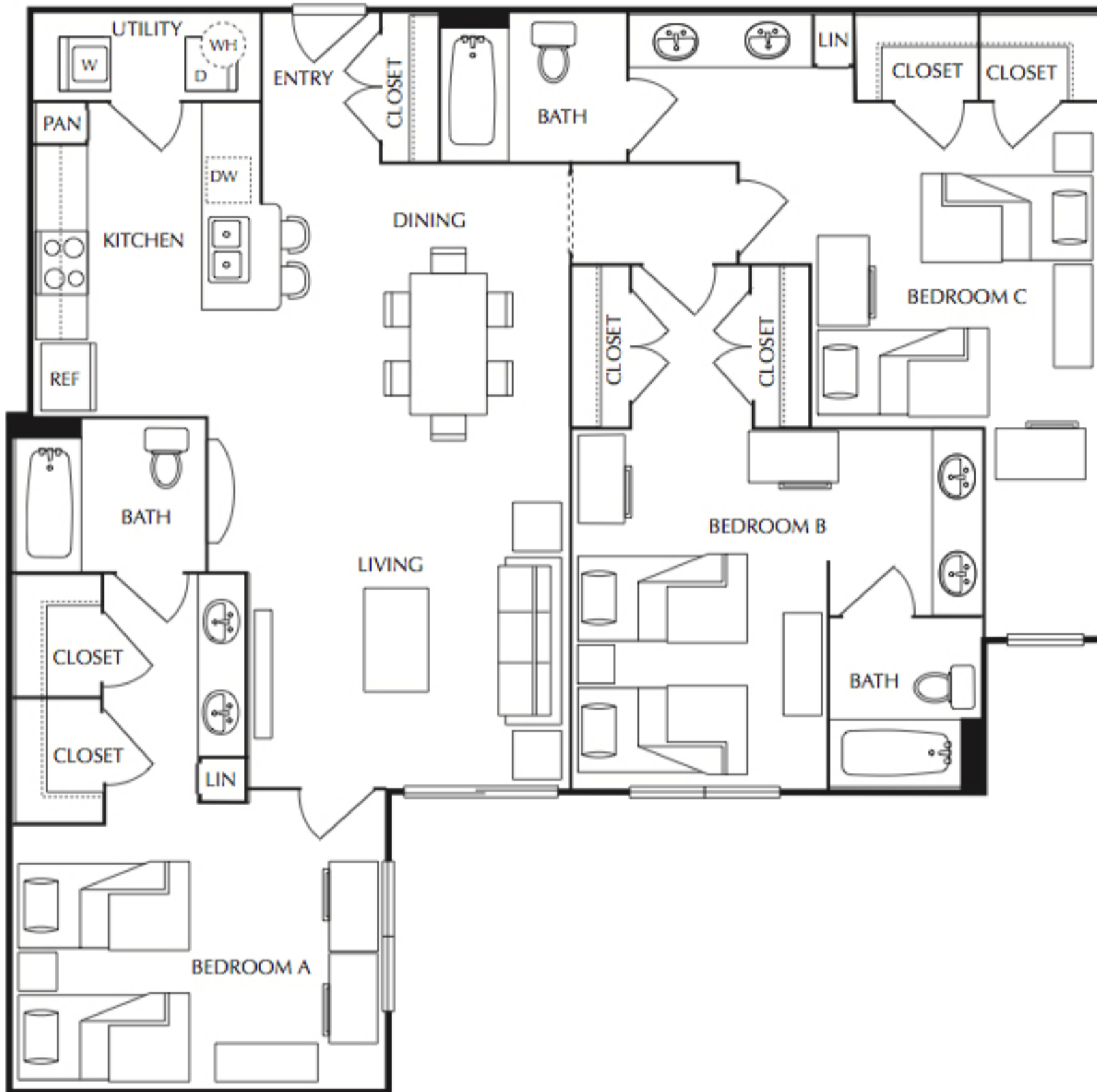




The Quarters

Cameron House • • • Montgomery House • • • Sterling House



• • • Unit C2, C2h • • • 3 Bed/3 Bath • • • 1,422 s.f. • • •

*Square footages are approximate. Architectural styling may vary per home.

*Handicap accessible units may differ in structure and include modifications to plumbing, cabinetry and appliances.

- Cameron House • • • 2707 Rio Grande St.
- Nueces House • • • • • 2300 Nueces St.
- Grayson House • • • • • 714 West 22nd St.
- Sterling House • • • • • 709 West 22nd St.
- Montgomery House • • • 2700 Nueces St.