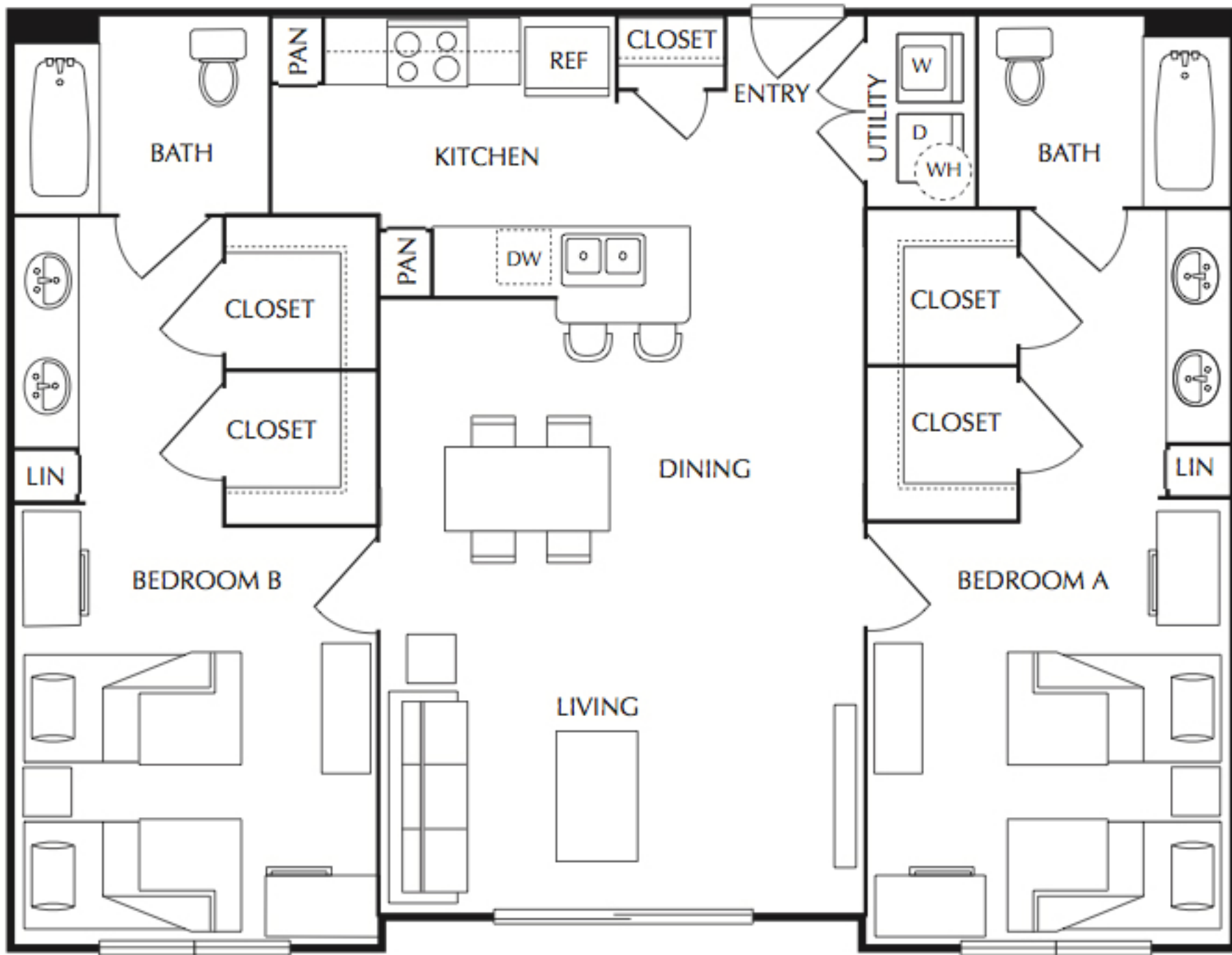




# The Quarters

**Cameron House • • • Montgomery House • • • Sterling House**



**• • • Unit B2, B2h • • • 2 Bed/2 Bath • • • 1,086 s.f. • • •**

\*Square footages are approximate. Architectural styling may vary per home.

\*Handicap accessible units may differ in structure and include modifications to plumbing, cabinetry and appliances.

- • • Cameron House • • • 2707 Rio Grande St.
- • • Grayson House • • • 714 West 22nd St.
- • • Montgomery House • • • 2700 Nueces St.

- • • Nueces House • • • • • 2300 Nueces St.
- • • Sterling House • • • • • 709 West 22nd St.