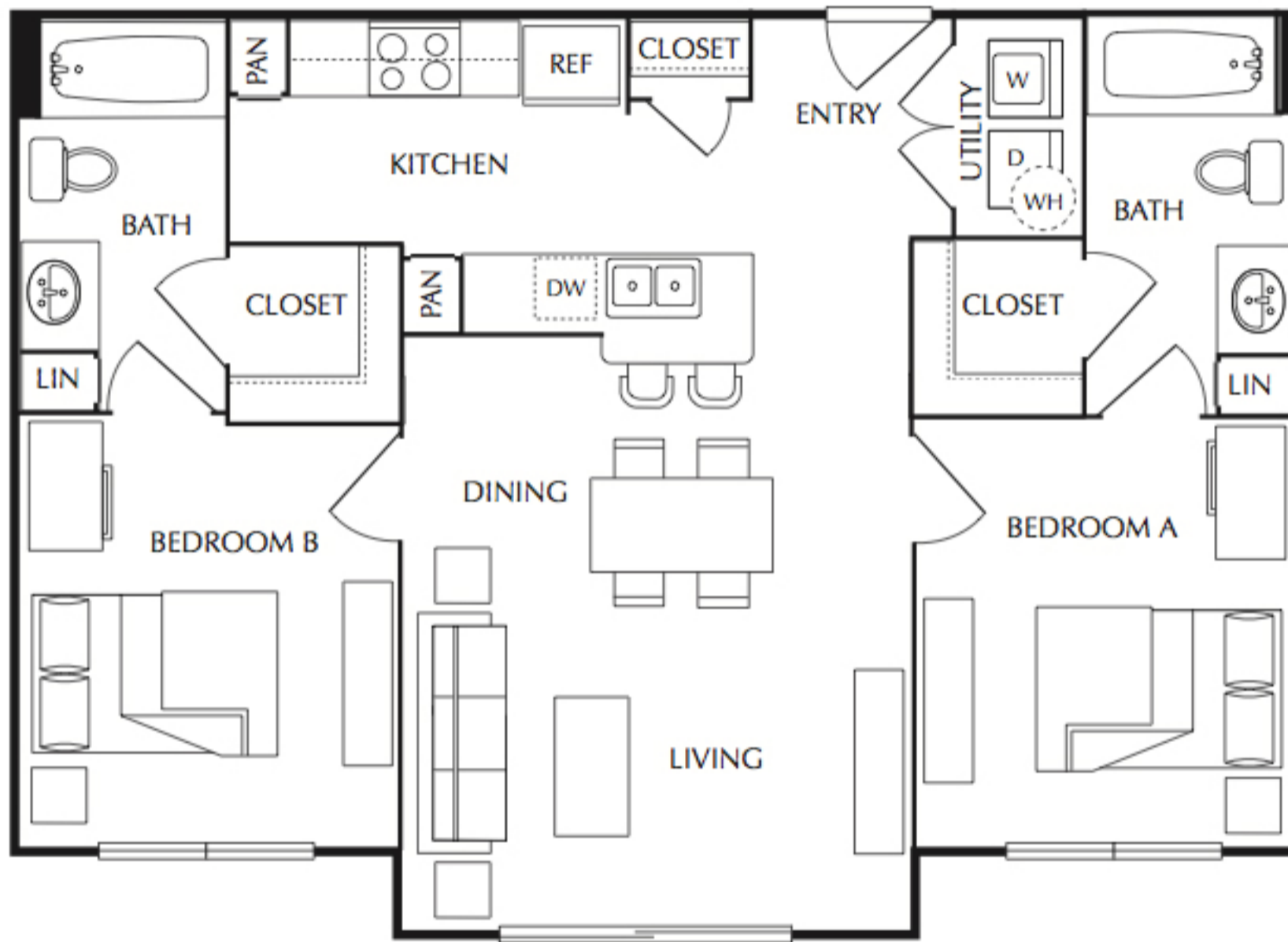




The Quarters

Cameron House • • • Montgomery House • • • Sterling House



• • • Unit B1 • • • 2 Bed/2 Bath • • • 836 s.f. • • •

*Square footages are approximate. Architectural styling may vary per home.

*Handicap accessible units may differ in structure and include modifications to plumbing, cabinetry and appliances.

- | | |
|---|--|
| • • • Cameron House • • • 2707 Rio Grande St. | • • • Nueces House • • • 2300 Nueces St. |
| • • • Grayson House • • • 714 West 22nd St. | • • • Sterling House • • • 709 West 22nd St. |
| • • • Montgomery House • • • 2700 Nueces St. | |