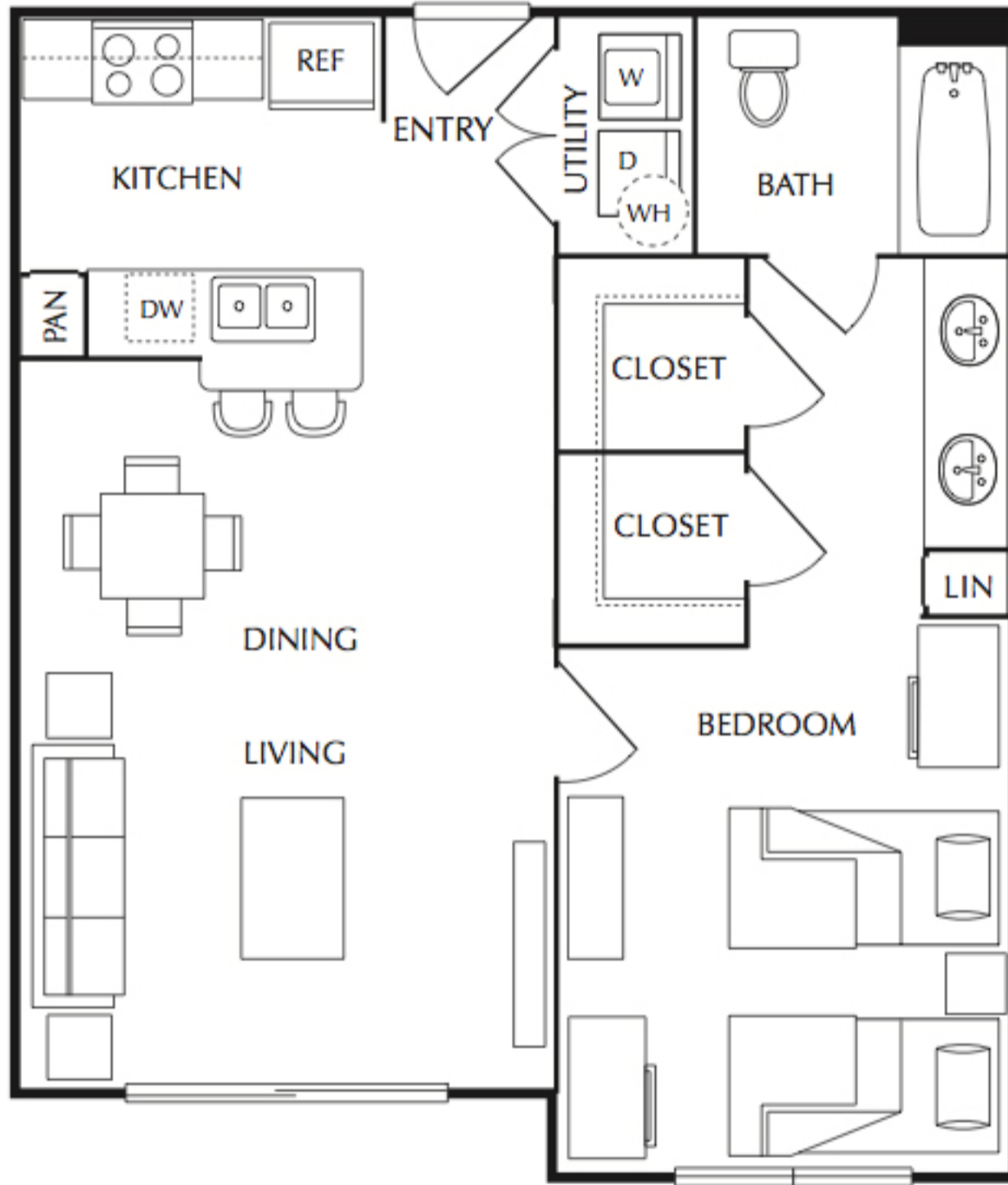




# The Quarters

**Cameron House • • • Montgomery House • • • Sterling House**



**• • • Unit A2, A2h • • • 2 Bed/2 Bath • • • 698 s.f. • • •**

\*Square footages are approximate. Architectural styling may vary per home.

\*Handicap accessible units may differ in structure and include modifications to plumbing, cabinetry and appliances.

- Cameron House • • • 2707 Rio Grande St.
- Nueces House • • • • • 2300 Nueces St.
- Grayson House • • • • 714 West 22nd St.
- Sterling House • • • • • 709 West 22nd St.
- Montgomery House • • • 2700 Nueces St.